

The background is split into two vertical panels. The left panel has a salmon-colored background with various star shapes in blue, yellow, and orange, along with small square confetti. The right panel is white with scattered confetti in blue, orange, and pink, and a large orange scribble in the bottom right corner.

JAPANESE LESSON

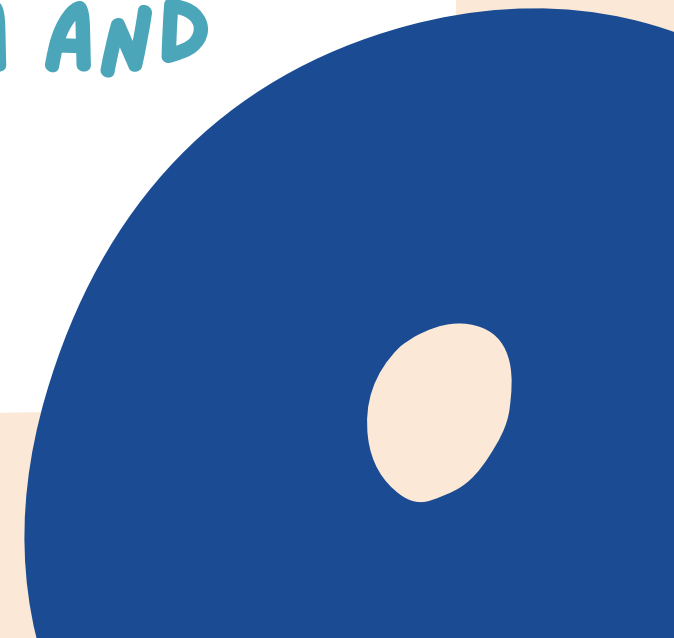
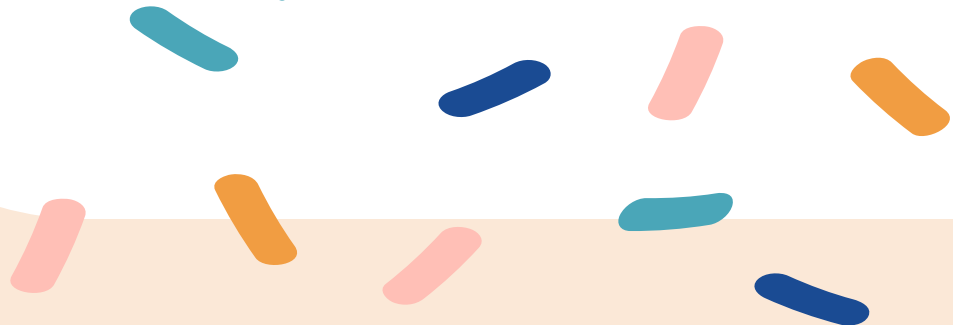
THE JAPANESE ALPHABETS

IN THE JAPANESE ALPHABETS, WE HAVE 3 DIFFERENT WRITING TYPES

- HIRAGANA
- KATAKANA
- KANJI

KANJI COMES FROM CHINA SO WHEN YOU KNOW JAPANESE WELL, YOU WILL BE ABLE TO READ CHINESE A LITTLE TOO!

HIRAGANA AND KATAKANA ARE THE JAPANESE TWO NATIVE WRITING STYLES — HIRAGANA AND KATAKANA. TOGETHER THEY'RE KNOWN AS KANA. IN OTHER WORDS, HIRAGANA AND KATAKANA ARE TWO DIFFERENT WAYS TO WRITE THE SAME THING.





あ

ち

HIRAGANA

お

え

LIKE THE ENGLISH ALPHABET, EACH HIRAGANA LETTER REPRESENTS A SPECIFIC SOUND AND DOES NOT HAVE ANY MEANING PER SE. BUT UNLIKE ENGLISH, THERE IS ONLY ONE WAY OF PRONOUNCING A SINGLE HIRAGANA LETTER OR COMBINATION OF LETTERS.

FOR EXAMPLE, 'E' CAN BE PRONOUNCED MANY DIFFERENT WAY IN ENGLISH, AS IN RED, REDO, POORER...

カ

サ

×

KATAKANA

KATAKANA ARE ANOTHER WAY OF WRITING THE HIRAGANA SOUNDS AND ARE USUALLY USED FOR FOREIGN WORDS:

ヒ



banana
.....
バナナ



milk
.....
ミルク



france
.....
フランス



lucy
.....
ルーシー

ト

×

≡



愛

友達

山

KANJI

川

人

THE JAPANESE IMPORTED KANJI FROM CHINA
A LONG TIME AGO AND ABSORBED IT INTO
THEIR LANGUAGE BY ASSIGNING JAPANESE
MEANINGS.

KANJI ARE DIFFERENT FROM HIRAGANA AND
KATAKANA BECAUSE THEY HAVE SPECIFIC
MEANINGS.

